

# BBL™ - BROADBAND LIGHT



- LARGE TREATMENT AREA
- LONG LIFE DUAL-LAMP DESIGN
- INTERCHANGEABLE FILTERS
- INTEGRATED SKIN COOLING
- HIGH POWER
- FAST TREATMENT TIMES

THE WORLD'S HIGHEST POWER PULSED LIGHT SYSTEM



# THE SCITON BBL™

An industry first, with greater horsepower and longer life. Sciton utilizes proprietary laser technology to drive BBL with more efficiency, longer lifetime and greater control. BBL has dual lamps for superior performance and the widest pulse width range in the industry. BBL is the first system to offer users control of treatment area surface temperature.

## CONTROL, CONSISTENCY, COMFORT

### CHANGE-ON-THE-FLY SMART FILTERS

BBL is an industry first with change-on-the-fly filters. A Broadband Light source means that a wide range of conditions can be treated without the need for additional handpieces. Wavelength can be selected by simply changing filters, which are recognized by the smart PROFILE control system, making BBL the most affordable and the most valuable intense pulsed light system available.

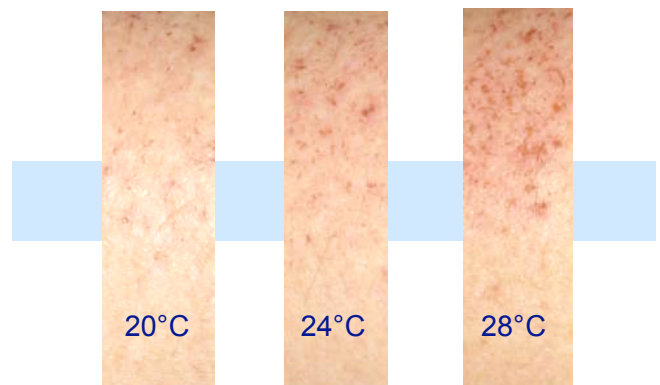
With smart filters just one handpiece is all you need.



### CONTROL OF SKIN TEMPERATURE

An integrated Thermo-Electric cooled sapphire crystal keeps the treatment area safe and cool. Skin surface temperature changes of 4 °C can cause immediately observable differences in the clinical response. BBL is the only system that can set skin temperature accurately for any temperature from 0 °C to 30 °C during an entire procedure for unparalleled consistency and comfort.

For deeper targets the high power of the quad-Thermo-Electric system can provide deep cooling for maximum patient comfort over a large aperture of 15 mm X 45 mm for very fast treatment of large areas.



Response vs. skin temperature.  
24 hours after pulsed light exposure.

The upper halves of these three skin areas were treated with BBL using the 515 filter at 12j/cm<sup>2</sup> and 20 ms pulse width. The ONLY variable was the temperature of the skin surface controlled by the BBL handpiece. This demonstrates the need to have precise control of skin temperature in pulsed light treatment.

## TWIN-LAMP TECHNOLOGY:

### MORE POWER - LONGER LIFE

BBL uses advanced dual-lamp technology. The lifetimes of lamps decrease rapidly as they are driven to higher energies. Using two lamps results in each lamp supplying half of the energy for lifetimes an order of magnitude longer than typical single lamp systems. As a result BBL comes with a standard 300,000 shot warranty.

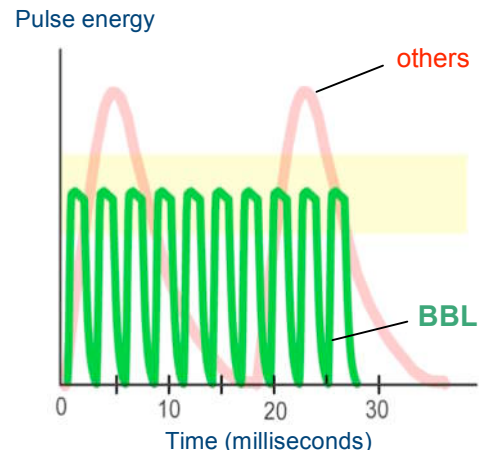
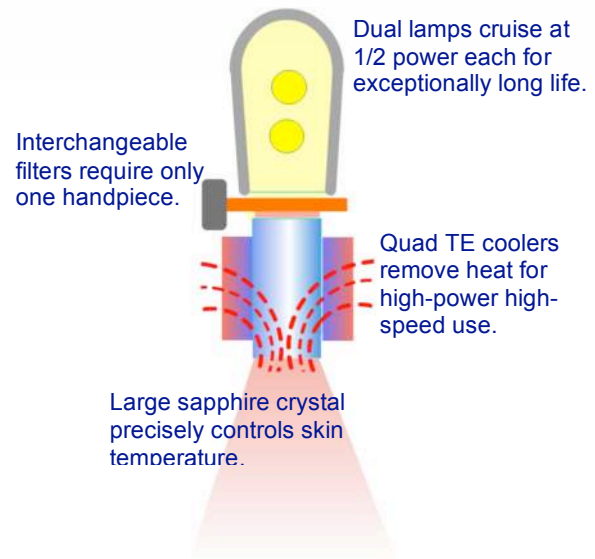
## SQUARE-WAVE ENERGY DELIVERY

BBL delivers a pulse to tissue with precise on and off times and controlled irradiance.

Many systems deliver only single or double pulses with extended low power tails below therapeutic levels resulting in higher than necessary fluence requirement for those systems. BBL square wave pulsing means there is no low energy tail and no wasted energy so fluence requirements are much less for the same treatment. The BBL pulse envelope is adjusted ten times within each pulse to achieve consistent, efficient results.

## TRUE PULSE WIDTH CONTROL

BBL utilizes active feedback modulation up to 10 times per pulse to distribute energy evenly over the entire pulse width with a wide range of delivery times. Older technologies simply fire two short pulses with a delay between them to simulate longer pulses inefficiently.



BBL delivers energy that stays within the desired therapeutic range for the entire pulse envelope with active feedback and control 10 times per pulse. Other systems deliver average fluence within the range, but with 2 or 3 large pulses.

## EFFICACY AND EFFICIENCY

Unwanted pigment changes occur in the top layers of skin. Vascular anomalies leading to facial flushing, redness and fine telangiectasias are also very near the surface. With precise surface cooling and filter selection, BBL can target skin anomalies unlike any other system.



Single treatment with 515-nm filter and 15°C skin temperature.



Two treatments with 515-nm filter and 20°C skin temperature.

The response of superficial vascular targets and surface pigmentation to intense pulsed light depends on temperature. With optimized temperature control, BBL is able to treat vascular and pigmented lesions with less fluence than other systems, leading to greater comfort, safety and consistency.

## THE FASTEST INTENSE PULSED LIGHT AVAILABLE



### FAST, CONSISTENT, COMFORTABLE.

Large treatment area, fast repetition rates,

precise skin temperature control, and easy to change filters take pulsed light treatments to the highest level with BBL. No other system can match BBL in power, durability, or value.

BBL can run at fast rates even at full fluence, where other systems slow down. High fluence at fast treatment speeds with a large spot size means faster patient throughput.

Treat up 13.5 cm<sup>2</sup> per second



Actual Spot Size

Fastest Pulse Rate

X

Large spot size

X

High fluence

=

World's Highest Power

## VALUE, FUNCTION, PERFORMANCE



**BBL** is available as a stand-alone system, or as a module in the **Profile MP™**, a fully expandable platform with room for up to 4 additional laser modules. Profile with BBL is the most useful system available.

The new **Profile HMV** package with **BBL** and dual **-ClearScan 1064-nm Nd:YAG lasers**, is the perfect system for treating Hair, Melanin, and Veins. It outperforms any other light based device on any skin type and hair color for these procedures. Profile HMV treats vascular conditions from leg veins to rosacea and flushing, and the widest range of pigmented lesions. With a wide variety of filters for BBL and two long pulse YAG laser modules no other system can beat it.

**HMV** is a system like no other. The only system you will ever need for treating unwanted hair, and vascular or pigment lesions.



Single BBL treatment courtesy of Catherine A. Fisher, M.D., Peoria, AZ.

## BBL™ BROADBAND PULSED LIGHT

Wavelength (nm)	400 to 1400
Filters (nm)	420, 515, 560, 590, 640, 695
Fluence	up to 30J/cm <sup>2</sup>
Treatment size	15 mm x 45 mm
Repetition rate	up to 2 Hz
Treatment Speed	up to 13.5 cm <sup>2</sup> /s
Pulse width	up to 200 milliseconds
Skin cooling	Integrated thermoelectric with large sapphire crystal; adjustable from 0°C to 30°C.
Lamp life	> 300,000 pulses
Supply	200-240 V, 50/60 Hz
Size (WxLxH)	38 cm x 82 cm x 110 cm
Weight	67 kilograms

